

Planmeca PlanScan®

The ultimate scanning experience



Now
connected to
your Planmeca
dental unit

World's first unit integrated intraoral scanner

Planmeca is proud to introduce **Planmeca PlanScan®** – the world's first dental unit integrated intraoral scanner. This unique integration guarantees a smooth workflow, as real-time scanning data is now immediately available from your chairside tablet.

Dental unit integrated intraoral scanner

The ultra-fast and accurate **Planmeca PlanScan®** can now be easily integrated into your digital Planmeca dental unit. Thanks to the new chairside integrated Full HD tablet device, you have constant and optimal access to live scanning data. This allows you to focus on clinical work in the treatment area without any distractions.

For an even smoother workflow, scanning can also be controlled from the dental unit's wireless foot control. In addition, the scanner provides practical sound guidance to ensure optimal data capture.

Unique foot controlled scanning

What really sets Planmeca PlanScan apart from other scanners, is that now you can also conveniently control its use from the dental unit's foot control, leaving your hands free for scanning and patient treatment at all times. You can use the foot control to easily toggle between prep, opposing and buccal views, so that you can focus on scanning without interruptions. Hands-free operation also guarantees impeccable infection control.

Easy and flexible use

Planmeca PlanScan has been designed for an efficient workflow – it is used just like any other instrument and shared effortlessly between different users. The plug-and-play scanner can also be easily installed in different dental units and different rooms. The flexible licensing system allows simultaneous use on multiple workstations during different CAD/CAM workflow steps.

Scanning is now easier than ever before!

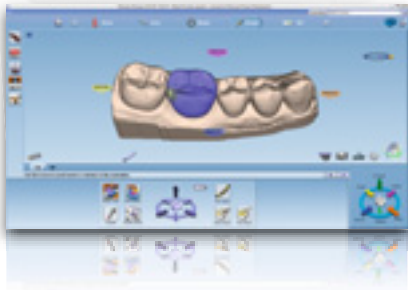
Discover the unparalleled benefits of integrated Planmeca PlanScan:

- Smooth and effortless workflow lets you concentrate on your patient
- Constant access to real-time scanning data
- Hands-free operation with wireless foot control
- Plug-and-play scanner with sound guidance
- Can be upgraded to any Planmeca dental unit
- Can be shared between different operatories
- Intelligent **Planmeca Romexis®** software licensing – different work phases (scan, design and manufacture) can be performed simultaneously by different users



Planmeca CAD/CAM™ Chairside solution

Better patient care, increased productivity



Planmeca PlanScan®

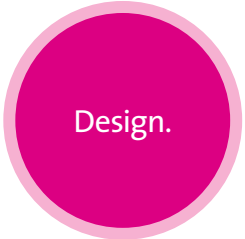
- Digital intraoral scanner
- Real-time, accurate and quick scanning
- Powder-free
- Open STL file format
- Can be used either standalone or integrated in the Planmeca dental unit
- Plug & play

Planmeca PlanCAD® Easy

- Fast and easy-to-use software suite for designing prosthetic works
- From single units to bridges
- Part of **Planmeca Romexis®** software
- Intelligent Planmeca Romexis licensing enables scanning, designing and milling independently
- Licensing from single to multiple users

Planmeca PlanMill® 40

- Easy-to-use, fast and precise 4-axis milling unit for dental clinics
- Designed for glass ceramics and other materials
- Automated tool condition control for high precision and quality restorations
- Unique usage monitoring from **Planmeca Romexis® Clinic Management**



Planmeca Showroom



brochurekit.planmeca.com



Planmeca iRomexis™



PLANMECA

Asentajankatu 6 | 00880 Helsinki | Finland | tel. +358 20 7795 500 | fax +358 20 7795 555 | sales@planmeca.com | www.planmeca.com

Images may contain optional items not included in standard delivery. Available configurations and features may have country or area specific variations. Some products displayed above may not be available in all countries or areas. Rights for changes reserved.

Planmeca, All in one, Anomat Plus, Cobra, Comfy, DentoVac, Digital perfection, Economat Plus, Elegant, Flexy, Mini-dent, Perio Fresh, PlanEasyMill, Planmeca AINO, Planmeca ARA, Planmeca CAD/CAM, Planmeca Chair, Planmeca Clarify, Planmeca Compact, Planmeca Intra, Planmeca iRomexis, Planmeca Lumion, Planmeca Maximity, Planmeca Minea, Planmeca Minendo, Planmeca Minetto, Planmeca Noma, Planmeca Online, Planmeca PlanCAD, Planmeca PlanClear, Planmeca PlanMill, Planmeca PlanScan, Planmeca Planosil, Planmeca ProCeph, Planmeca ProFace, Planmeca ProID, Planmeca ProMax, Planmeca ProModel, Planmeca ProOne, Planmeca ProScanner, Planmeca ProSensor, Planmeca ProX, Planmeca Romexis, Planmeca Serenus, Planmeca SingLED, Planmeca Sovereign, Planmeca Ultra Low Dose, Planmeca Vision, Planmeca Verity, Planmeca Waterline Cleaning System, Planmeca Xtremity, Proline Dental Stool, ProTouch, Saddle Stool, SmartPan, SmartTouch, Trendy and Ultra Relax are registered or non-registered trademarks of Planmeca in various countries.

